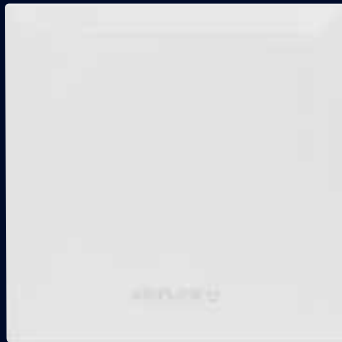


QuietAir QT100

Toilet, bathroom and en-suite ventilation



KEY FEATURES

- Two speed ventilation up to 25 l/s (90 m³/h)
- Awarded Quiet Mark by Noise Abatement Society
- Power consumption from only 5 W
- Interval timer for routine auto extraction
- Long-life ball bearings with approx. 40,000 hr life
- Suitable for installation anywhere in Zone 1 of bathrooms when installed with an RCD
- 3 year warranty

The whisper quiet QuietAir QT100 is designed to provide powerful extraction levels that exceed the requirements of the latest Building Regulations.

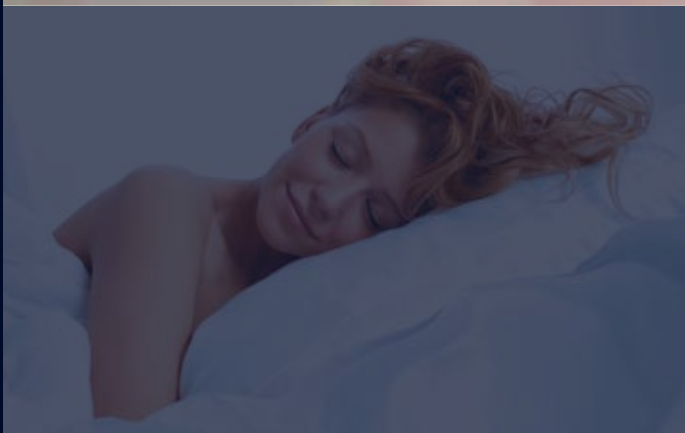
The QuietAir QT100 is the quietest fan available complying with Building Regulations "Installed Performance" requirements when ducted.

QuietAir is a range of elegant, discreet axial fans that are extremely quiet with various control options that activate the fan only when needed – remote switching, timer, humidity timer and motion sensor with timer. By using exceptionally low energy this helps to reduce carbon emissions and also save on your energy bills.

Room refresh (interval timer) enables automatic extraction at pre-set times if required.

MODELS

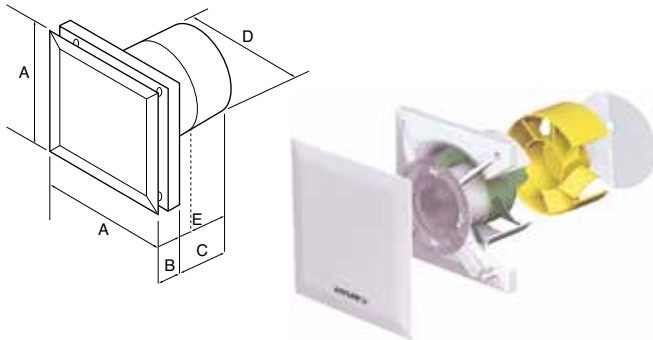
Basic	Control by remote switch
Timer	Adjustable timer overrun of 6, 10, 15 or 21 minutes
Humidity Timer	Adjustable Humidity 60 to 90% RH with adjustable timer
Motion Sensor Timer	Motion sensor activation



TECHNICAL DATA

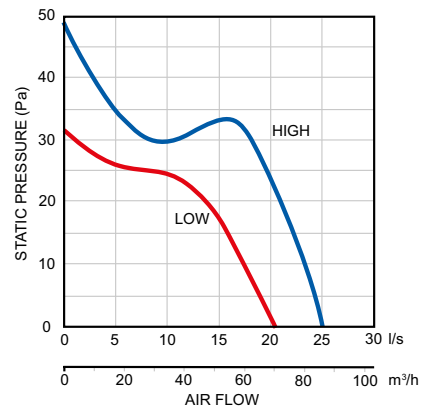
Specification	QuietAir QT100B	QuietAir QT100T	QuietAir QT100HT	QuietAir QT100MST
Air flow m ³ /h*			75 / 90	
Air flow l/s*			21 / 25	
Fan type			Axial	
Controls	Basic	Timer	Humidity Timer	Motion Sensor Timer
Mounting			Wall / Ceiling	
Sound pressure dB(A)@3m			25 / 30	
Delay start (min)	No	2	2	No
Adjustable timer (min)	No	6,10,15,21	6,10,15,21	15
Adjustable humidity (%RH)			60 - 90	
Interval timer, auto start (hrs)		0,8,12,24		
Power Watts			5 / 9	
Amps			0.04 / 0.06	
Specific Fan Power (SFP)			0.24	
Building Regulations ADF			Yes	
Duct Diameter (mm)			100	
Voltage			230 V / 1 ph / 50 Hz	
Rating			IP45	
Max ambient temperature			40°C	
Weight (kg)			0.8	
Dimensions (H x W x D) mm			147 x 147 x 131	
Part No.	9041259	9041260	9041261	9041262
EAN Barcode	5019009306445	5019009306452	5019009306469	5019009306476

DIMENSIONS



Model	A	B	C	D	E
QuietAir QT100	147	35	96	98	52

PERFORMANCE



CONTROLS & ACCESSORIES



Others products available from airflow.com

Call: 01494 525252

Visit: airflow.com



Airflow Developments Limited
Aidelle House, Lancaster Road,
Cressex Business Park,
High Wycombe, Buckinghamshire,
United Kingdom, HP12 3QP

E-mail: info@airflow.com
Telephone: +44 (0) 1494 525252

airflow.com

© Airflow Developments Limited. Airflow Developments Limited reserve the right, in the interests of continuous development, to alter specifications without prior notice. All orders are accepted subject to our conditions of sale which are available on request



80001414 - Issue 4 08/24